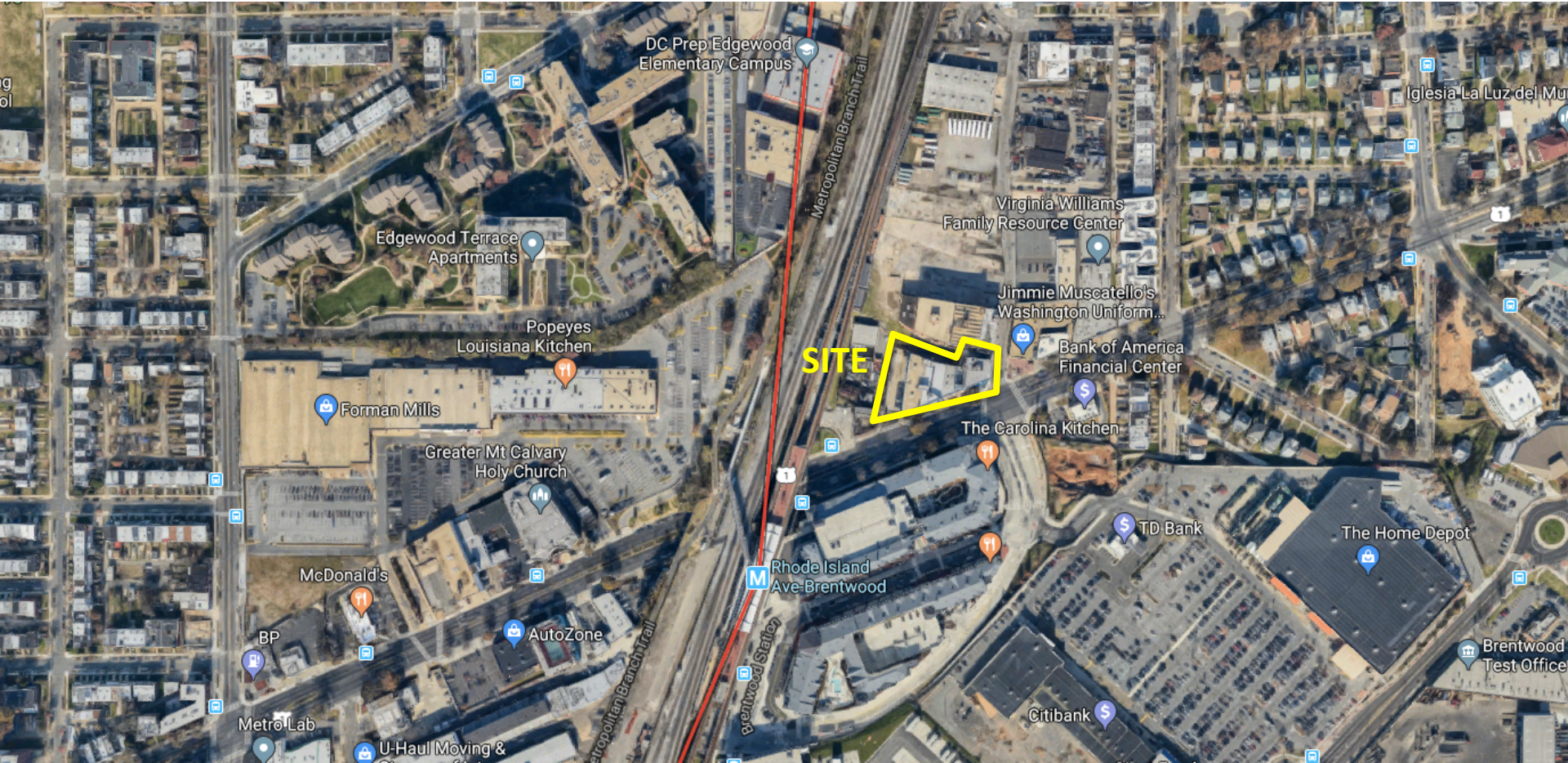


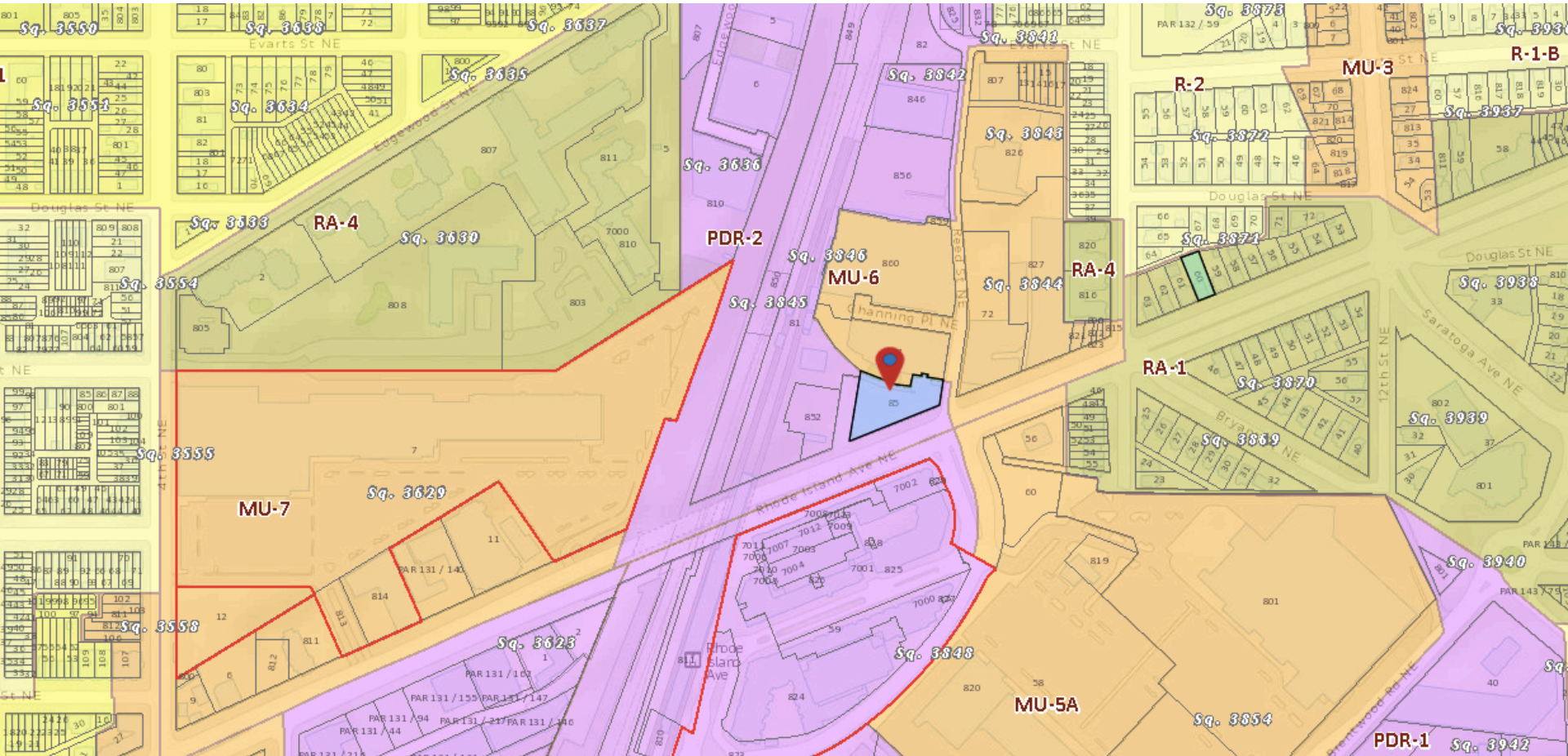
# 806 Rhode Island Avenue - Site



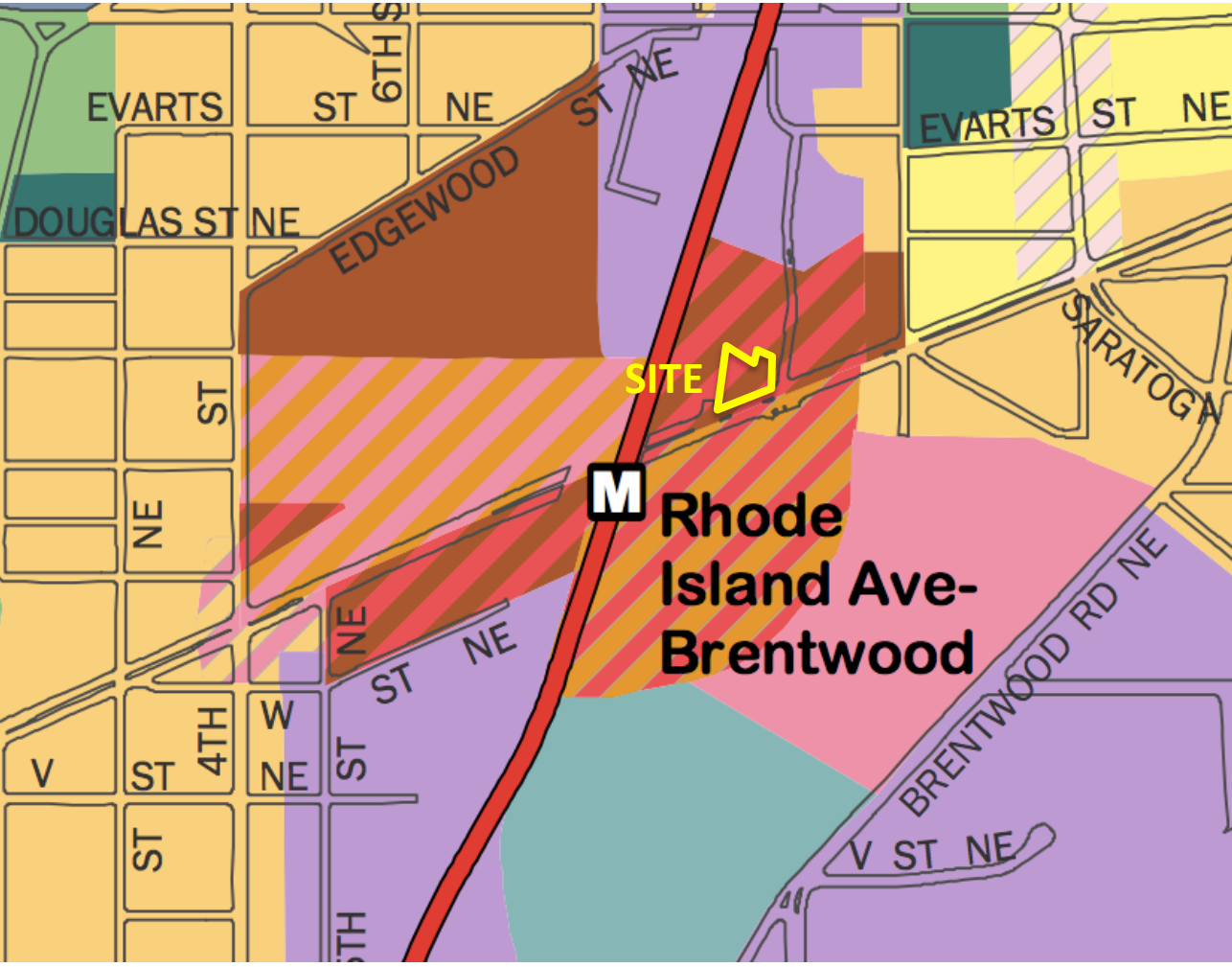
# 806 Rhode Island Avenue – Existing Building



# 806 Rhode Island Avenue – Current and Surrounding Zoning



# 806 Rhode Island Avenue – Comprehensive Plan Future Land Use Map



- Low Density Residential
- Moderate Density Residential
- Medium Density Residential
- High Density Residential
- Low Density Commercial
- Moderate Density Commercial
- Medium Density Commercial
- High Density Commercial
- Production, Distribution, and Repair
- Federal
- Local Public Facilities
- Institutional
- Parks, Recreation, and Open Space
- Mixed Land Use
- WATER